

Cast Brass Sweat Adapter Fittings • Spec Sheet



*Product will have LF imprinted on the body for Lead Free

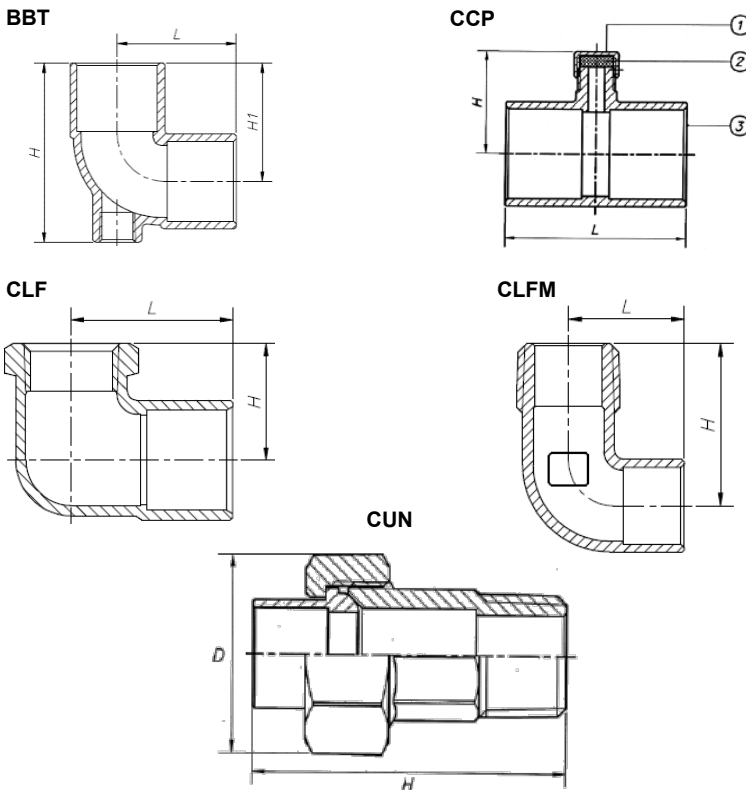
FEATURES & BENEFITS

- Lead Free Cast Brass*
- Primarily used for heating systems as a transition application

MATERIAL SPECIFICATIONS

Part	Material
Body	Brass C89550

DIMENSIONS



Part #	Size	L	H	H1
BBT03LF	1/2" C X 1/8" FIP X 1/2" C	0.95	1.52	0.95
BBT04LF	3/4" C X 1/8" FIP X 3/4" C	1.30	1.97	1.30

Part #	Size	L	H
CCP03VLF	1/2" C X 1/2" C	0.87	1.27
CCP04VLF	3/4" C X 1/2" C	1.00	1.77

Part #	Size	L	H
CLF0303LF	1/2" C X 1/2" FIP	1.08	0.89
CLF0403LF	3/4" C X 1/2" FIP	1.38	1.02
CLF0404LF	3/4" C X 3/4" FIP	1.40	1.08
CLFM0303LF	1/2" C X 1/2" MIP	0.95	1.32
CLFM0404LF	3/4" C X 3/4" MIP	1.20	1.48

Part #	Size	D	H
CUN03MLF	1/2" MIP X 1/2" C	1.35	2.15
CUN04MLF	3/4" MIP X 3/4" C	1.64	2.68

*This product complies with 0.25% weighted average lead content on wetted surfaces in accordance with the Safe Drinking Water Act (SDWA) / Federal Public Law No. 111-380.



CALIFORNIA 5595 Fresca Dr., La Palma CA 90623
TEXAS 1150 Silber Rd., Houston TX 77055
ILLINOIS 278 Windy Point Dr., Glendale Heights, IL 60139
GEORGIA 113 Industrial Blvd., Americus, Georgia 31709
NEW YORK PO Box 27, Rt.22, Brewster NY 10509
 WEB: www.matco-norca.com

• Phone: 866-532-8306 • Fax: 866-532-8307
 • Phone: 800-935-5456 • Fax: 713-680-2999
 • Phone: 844-412-5068 • Fax: 800-640-2252
 • Phone: 800-433-7526 • Fax: 800-533-5134
 • Phone: 800-431-2082 • Fax: 845-278-9056
 EMAIL: mail@matco-norca.com

Cast Brass Sweat Adapter Fittings • Spec Sheet



*Product will have LF imprinted on the body for Lead Free

FEATURES & BENEFITS

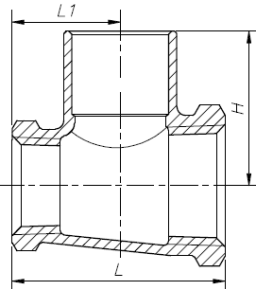
- Lead Free Cast Brass*
- Primarily used for heating systems as a transition application

MATERIAL SPECIFICATIONS

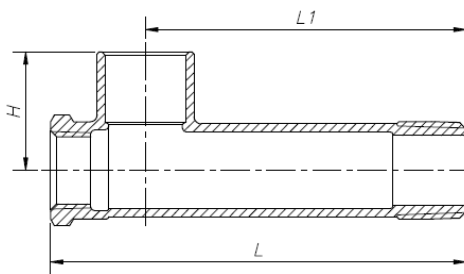
Part	Material
Body	Brass C89550

DIMENSIONS

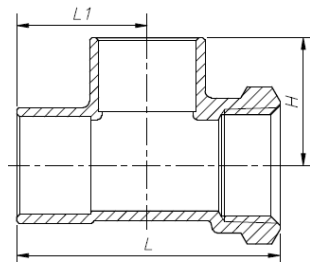
CRTF



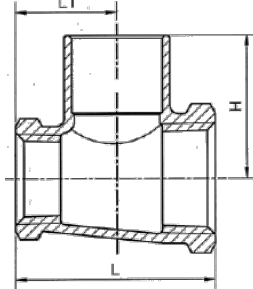
CRTFM



CTF



CTFT



Part #	Size	L	H	L1
CRTF030304LF	1/2" IP X 1/2" IP X 3/4" C	1.93	1.29	0.97
CRTF0304T03LF	1/2" C X 3/4" FIP X 1/2" C	2.11	0.99	0.93
CRTF040303LF	3/4" IP X 1/2" IP X 1/2" C	1.71	1.17	0.83
CRTF040304LF	3/4" IP X 1/2" IP X 3/4" C	1.93	1.40	0.98
CRTF0403LF	3/4" C X 3/4" X C 1/2" FIP	2.64	0.94	1.32
CRTF0403T04LF	3/4" C X 1/2" FIP X 3/4" C	2.23	1.26	1.30
CRTF0503LF	1" C X 1" C X 1/2" FIP	2.91	1.15	1.45
CRTF0503T05LF	1" C X 1/2" FIP X 1" C	2.76	1.67	1.66
CRTF0504LF	1" C X 1" C X 3/4" FIP	2.93	1.18	1.47
CRTF0504T05LF	1" C X 3/4" FIP X 1" C	2.84	1.57	1.66
CRTF0603LF	1-1/4" C X 1-1/4" C X 1/2" FIP	3.11	1.21	1.56
CRTF0604LF	1-1/4" C X 1-1/4" C X 3/4" FIP	3.31	1.36	1.65
CRTF0703LF	1-1/2" C X 1-1/2" C X 1/2" FIP	3.49	1.40	1.75
CRTF0704LF	1-1/2" C X 1-1/2" C X 3/4" FIP	3.57	1.44	1.78
CRTFM040304LF	3/4" MIP X 1/2" FIP X 3/4" C	4.48	1.27	1.02
CTF0303LF	1/2" C X 1/2" C X 1/2" FIP	2.09	0.89	1.04
CTF03T03LF	1/2" C X 1/2" FIP X 1/2" C	1.77	0.99	0.90
CTF0404LF	3/4" C X 3/4" C X 3/4" FIP	2.76	0.96	1.38
CTF04T04LF	3/4" C X 3/4" FIP X 3/4" C	2.38	1.15	1.18
CTFT04T04LF	3/4" FIP X 3/4" FIP X 3/4" C	1.75	1.43	0.88

*This product complies with 0.25% weighted average lead content on wetted surfaces in accordance with the Safe Drinking Water Act (SDWA) / Federal Public Law No. 111-380.



CALIFORNIA 5595 Fresca Dr., La Palma CA 90623
TEXAS 1150 Silber Rd., Houston TX 77055
ILLINOIS 278 Windy Point Dr., Glendale Heights, IL 60139
GEORGIA 113 Industrial Blvd., Americus, Georgia 31709
NEW YORK PO Box 27, Rt.22, Brewster NY 10509
 WEB: www.matco-norca.com

• Phone: 866-532-8306 • Fax: 866-532-8307
 • Phone: 800-935-5456 • Fax: 713-680-2999
 • Phone: 844-412-5068 • Fax: 800-640-2252
 • Phone: 800-433-7526 • Fax: 800-533-5134
 • Phone: 800-431-2082 • Fax: 845-278-9056
 EMAIL: mail@matco-norca.com